

Light efficiency:

50 Lumen/Watt

Light quality:

CRI: 91.2

Color temperature:

4634 K

Output: 19101 lm

Peak: 143200 cd

Power: 384 W

PF: 1.0

No photo

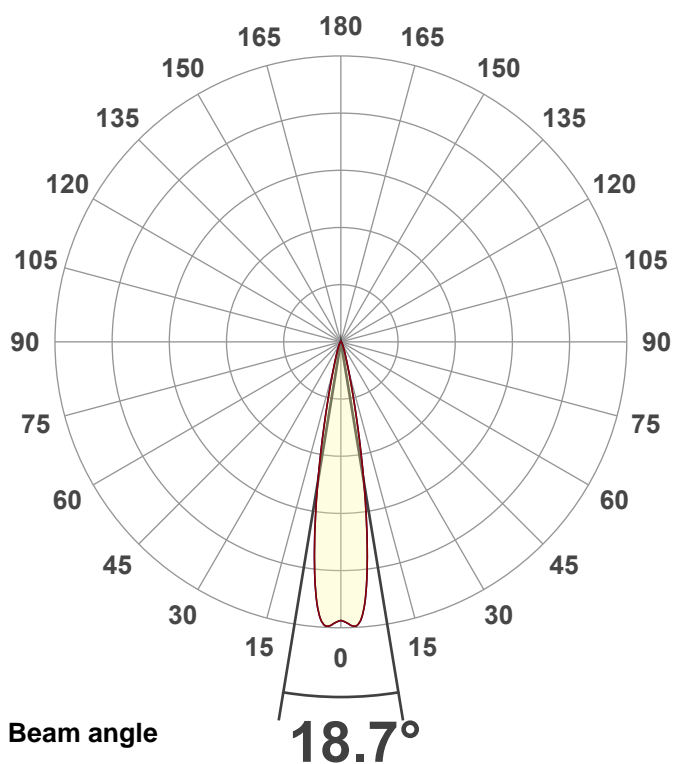
Product name:

40 Hex Panel IP (Full On,4500K)

Item number:

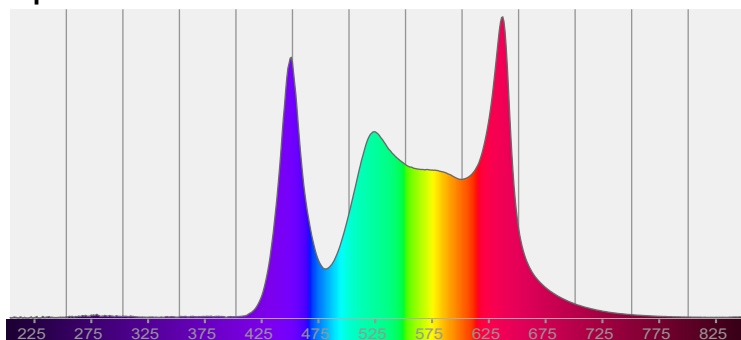
Date and time:

10/9/2025 2:38:21 PM



CIE 1931  
x: 0.356  
y: 0.358

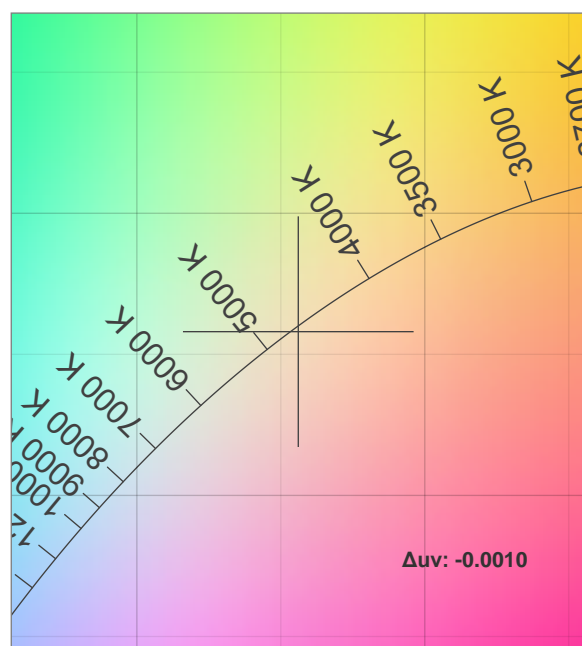
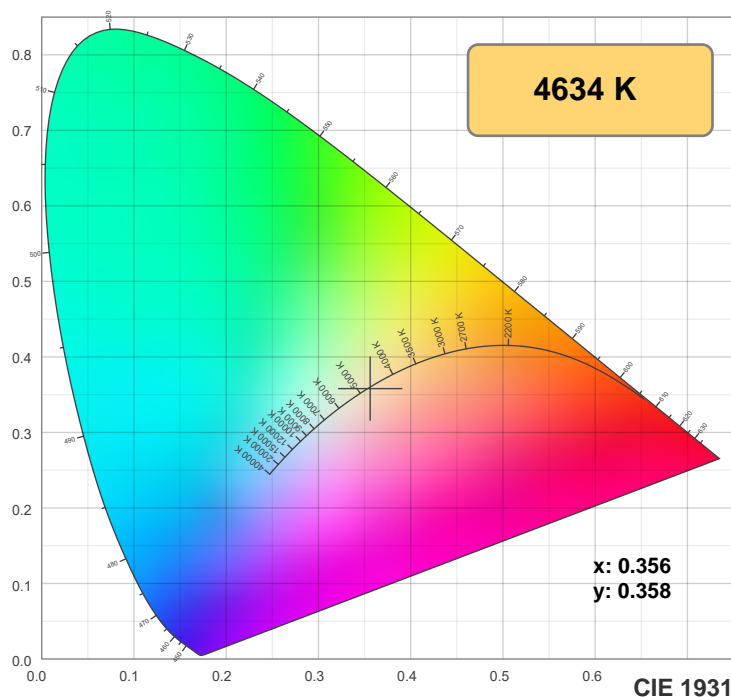
Spectra



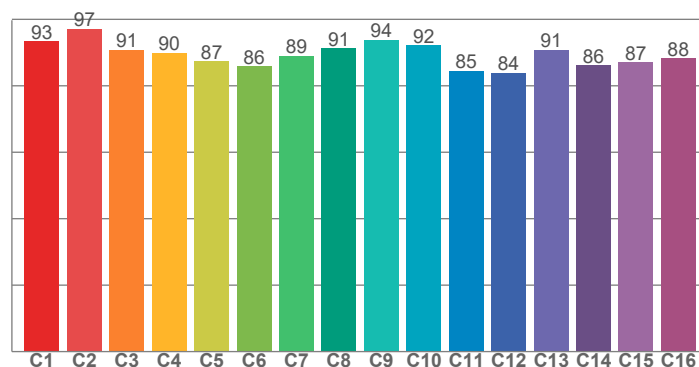
Power

Voltage: 115 V  
Current: 3.34 A  
Frequency: 0 Hz

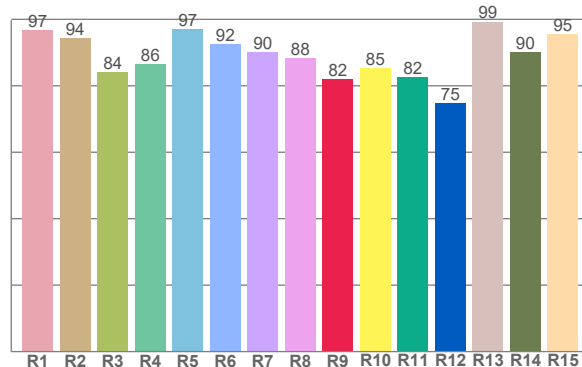
## Color details



**TM-30: 89.9**



**CRI: 91.2 (R1-R8)**



CRI R values, only R1-R8 are used to calculate final CRI value

R1	R2	R3	R4	R5	R6	R7	R8	R9	R10	R11	R12	R13	R14	R15
96.6	94.4	84.0	86.4	97.1	92.5	90.1	88.3	82.1	85.3	82.5	74.7	99.3	90.0	95.5

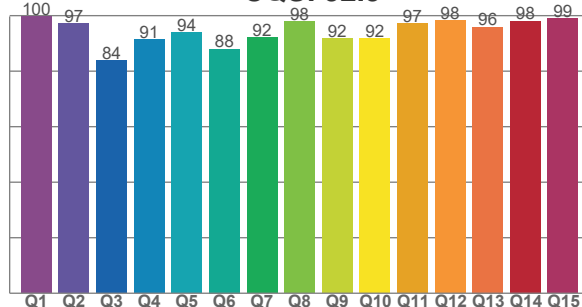
TM30 C values, 16 binned values out of total of 99 C values

C1	C2	C3	C4	C5	C6	C7	C8	C9	C10	C11	C12	C13	C14	C15	C16
93.4	97.2	90.9	90.0	87.4	85.9	89.0	91.3	93.9	92.2	84.5	84.0	90.8	86.2	87.0	88.2

CQS Q values

Q1	Q2	Q3	Q4	Q5	Q6	Q7	Q8	Q9	Q10	Q11	Q12	Q13	Q14	Q15
99.8	97.1	83.8	91.4	94.0	88.0	92.1	97.9	91.7	91.8	97.1	98.3	96.0	98.1	98.9

**CQS: 92.9**



### Color parameters

Color temperature	Color rendering index	Red component	Color fidelity	Color gamut	Color quality scale	Color coordinate cie 1931	Color coordinate cie 1931	Color coordinate	Color coordinate	Color deviation from black body
CCT	CRI	CRI R9	TM30 Rf	TM30 Rg	CQS	x	y	u	v	$\Delta uv$
4634 K	91.2	82.1	89.9	107.5	92.9	0.356	0.358	0.216	0.326	-0.0010

# TM-30 details

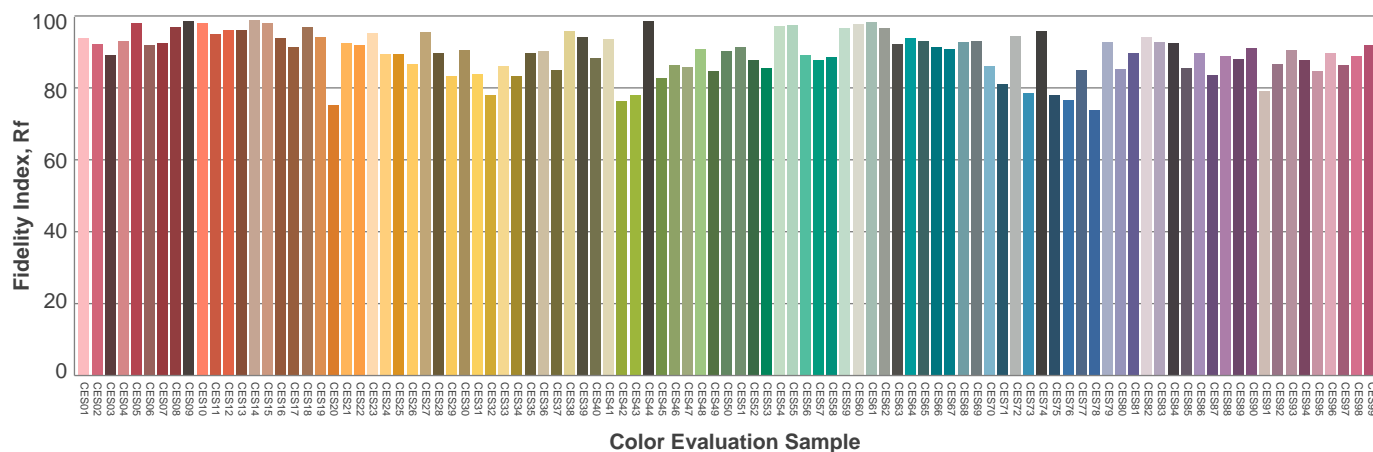
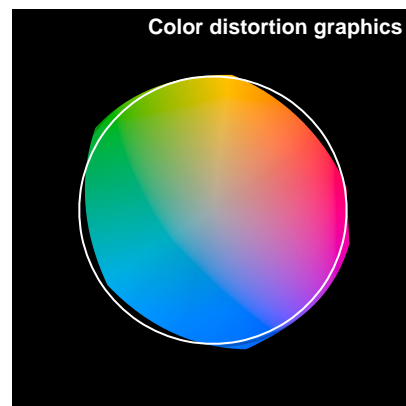
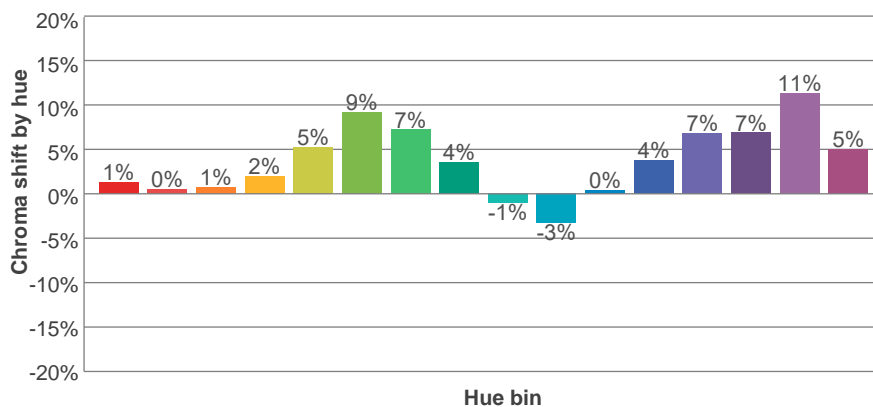
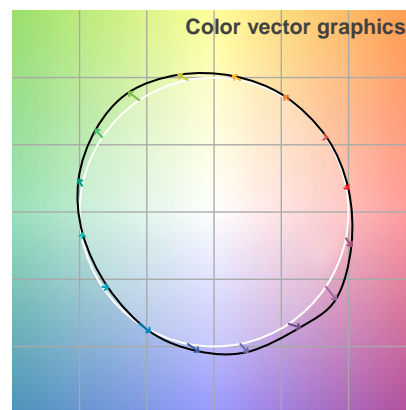
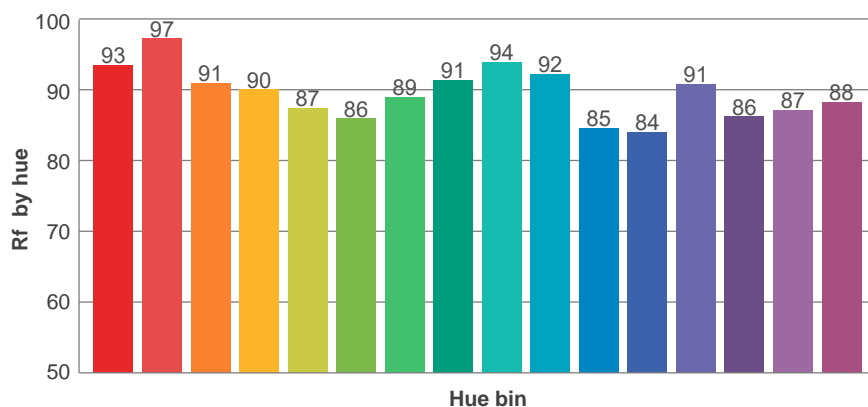
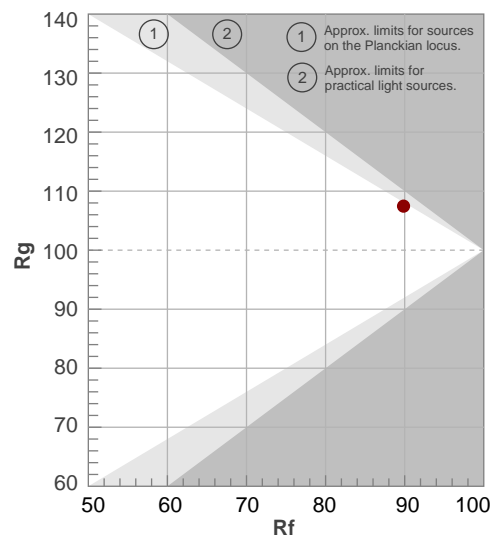
**Rf 89.9**

Fidelity index Rf

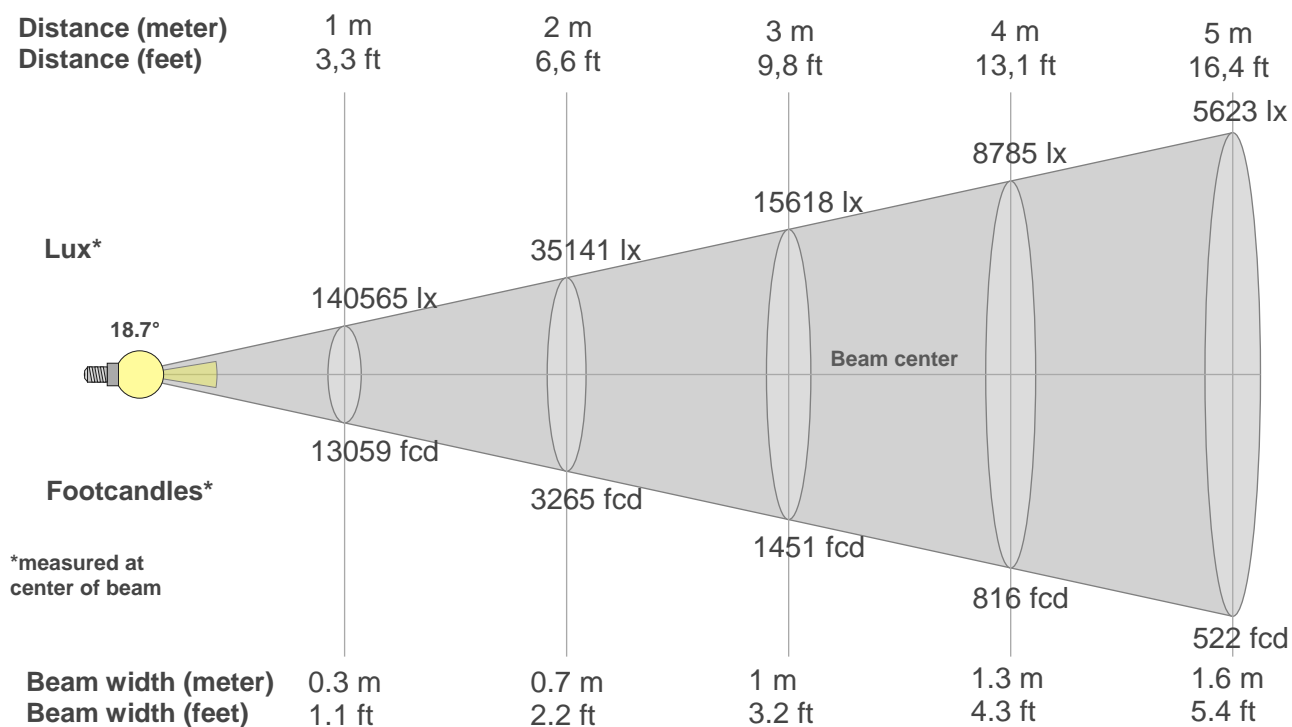
**Rg 107.5**

Gamut index Rg

Hue Bin	R <sub>i</sub>	Shifts (%)	
		Chroma	Hue
1	93	1%	-2%
2	97	0%	0%
3	91	1%	5%
4	90	2%	6%
5	87	5%	6%
6	86	9%	3%
7	89	7%	-2%
8	91	4%	-4%
9	94	-1%	-3%
10	92	-3%	3%
11	85	0%	10%
12	84	4%	9%
13	91	7%	4%
14	86	7%	5%
15	87	11%	-4%
16	88	5%	-5%



## Beam details



### Beam intensities from 1-20m

1m	2m	3m	4m	5m	6m	7m	8m	9m	10m	11m	12m	13m	14m	15m	16m	17m	18m	19m	20m
3.3ft	6.6ft	9.8ft	13.1ft	16.4ft	19.7ft	23ft	26.2ft	29.5ft	32.8ft	36.1ft	39.4ft	42.7ft	45.9ft	49.2ft	52.5ft	55.8ft	59.1ft	62.3ft	65.6ft
140565lx	35141lx	15618lx	8785lx	5623lx	3905lx	2869lx	2196lx	1735lx	1406lx	1162lx	976lx	832lx	717lx	625lx	549lx	486lx	434lx	389lx	351lx
13059fcd	3264.7fcd	1451fcd	816.2fcd	522.4fcd	362.7fcd	266.5fcd	204fcd	161.2fcd	130.6fcd	107.9fcd	90.7fcd	77.3fcd	66.6fcd	58fcd	51fcd	45.2fcd	40.3fcd	36.2fcd	32.6fcd

### Intensities in 0° c-plane

0°	1°	2°	3°	4°	5°	6°	7°	8°	9°	10°	11°	12°	13°	14°	15°	16°	17°	18°	19°
141k	141k	143k	143k	141k	134k	123k	109k	93k	77k	61k	47k	35k	26k	20k	15k	12k	10k	8k	7k
100%	101%	102%	102%	100%	95%	88%	78%	66%	55%	43%	33%	25%	19%	14%	11%	9%	7%	6%	5%

### Intensities in 90° c-plane

0°	1°	2°	3°	4°	5°	6°	7°	8°	9°	10°	11°	12°	13°	14°	15°	16°	17°	18°	19°
141k	141k	143k	143k	141k	134k	123k	109k	93k	77k	61k	47k	35k	26k	20k	15k	12k	10k	8k	7k
100%	101%	102%	102%	100%	95%	88%	78%	66%	55%	43%	33%	25%	19%	14%	11%	9%	7%	6%	5%

### Intensities in 180° c-plane

0°	1°	2°	3°	4°	5°	6°	7°	8°	9°	10°	11°	12°	13°	14°	15°	16°	17°	18°	19°
141k	141k	143k	143k	141k	134k	123k	109k	93k	77k	61k	47k	35k	26k	20k	15k	12k	10k	8k	7k
100%	101%	102%	102%	100%	95%	88%	78%	66%	55%	43%	33%	25%	19%	14%	11%	9%	7%	6%	5%

### Intensities in 270° c-plane

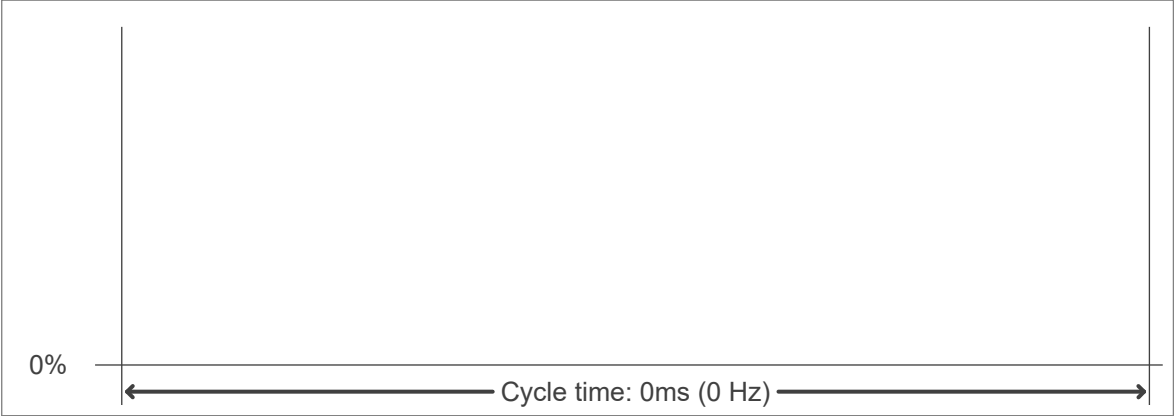
0°	1°	2°	3°	4°	5°	6°	7°	8°	9°	10°	11°	12°	13°	14°	15°	16°	17°	18°	19°
141k	141k	143k	143k	141k	134k	123k	109k	93k	77k	61k	47k	35k	26k	20k	15k	12k	10k	8k	7k
100%	101%	102%	102%	100%	95%	88%	78%	66%	55%	43%	33%	25%	19%	14%	11%	9%	7%	6%	5%

Beam angle 50%	Field angle 10%	Cutoff angle 2,5%	Intensity ratio in 120° cone	Intensity ratio in 90° cone
18.7°	30.4°	46.7°	96.5%	93.6%

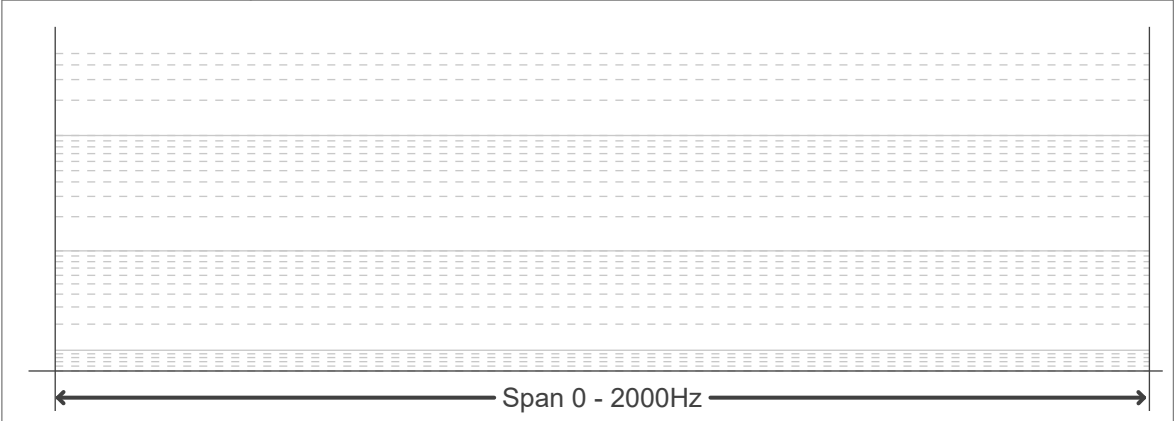
Flicker curve (complete sampled flicker signal)



Flicker frame (frame of one flicker period)



Flicker FFT (frequency scope of flicker curve)



Flicker results:

Flicker frequency:		n/a Hz	
Flicker index:	n/a	JA8/10 40Hz	n/a %
Flicker percentage:	n/a %	JA8/10 90Hz	n/a %
SVM: (Visual flicker)	n/a	JA8/10 200Hz	n/a %
PstLM	n/a	JA8/10 400Hz	n/a %
Mp	n/a	JA8/10 1000Hz	n/a %

Flicker conditions:

Sample rate:	n/a samples/second
--------------	--------------------